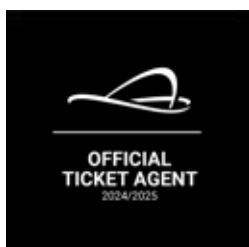


# EXPERIENCES BY Wembley Stadium

SPORT, MUSIC and OTHER EVENTS

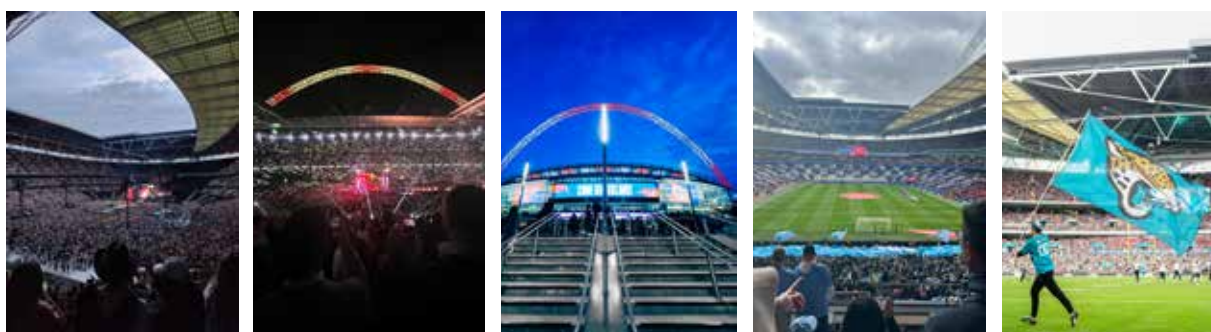
## Always authorized tickets!



*GO Sport Travel are proud to give you the opportunity to book your authorized seat at Wembely Stadium, as Scandinavia's only Official Ticket Agent, and one of six in total.*

*Our tickets are exclusively contracted with Wembley Stadium. This means your ticket is authorized and you can be sure to enter the stadium without any issues. We get the tickets sent to us before each event.*

*Wembley is right in the middle of the action, offering sporting events and world-class concerts. More information about events can be found on [www.gosporttravel.com](http://www.gosporttravel.com) and [www.gomusictravel.se](http://www.gomusictravel.se)*



## Contact

GO Sport Travel | GO Music Travel

Tel: +46 (0)660-21 10 90 - Örnsköldsvik, Sweden

Tel: +44 (0)20 7240 3983 - Camden Town, London

Email: [info@gosporttravel.com](mailto:info@gosporttravel.com), [info@gomusictravel.se](mailto:info@gomusictravel.se)

[www.gosporttravel.com](http://www.gosporttravel.com) | [www.gomusictravel.se](http://www.gomusictravel.se)



# CORE EVENTS

## Bobby Moore Hospitality PREMIUM

Level 1 - Halfway line

### Your seat includes:

- VIP Entrance, Bobby Moore entrance Level 1
- Seats positioned behind the players dugout and close to the trophy route
- A private fixed table in the exclusive Bobby Moore Room for up to 3 hours before kick-off, and an hour post final whistle
- Inclusive bar of fine wines, beers, spirits and soft drinks including brands such as Guinness, Camden Hells and premium wines.
- Unlimited Laurent Perrier Champagne, served pre and post-match
- Canapés served upon arrival
- 4 course fine dining including cheeseboard served post-game
- 100% authorized ticket from Wembley Stadium



## Taphouse Social

Level 2 - Behind goal - West or East

### Your seat includes:

- Access to Wembley Stadium Connected by EE's newest premium area Taphouse Social, located on Level Two.
- Premium seating on Level Two with padded seats offering
- fantastic views.
- Dedicated entrance on the East or West of the stadium.
- Access to premium bar and food outlets within Taphouse Social, including Taphouse Kitchen, Taphouse Bites and Taphouse Treats which include a wide range of sweet and savoury options available to purchase.
- Enjoy the M&S Foodhall within the concourse.
- Unreserved relaxed seating within the bar area for you and your guests.
- 100% authorized ticket from Wembley Stadium



# OTHER EVENTS

## Concerts, NFL, Boxing and more

Level 2

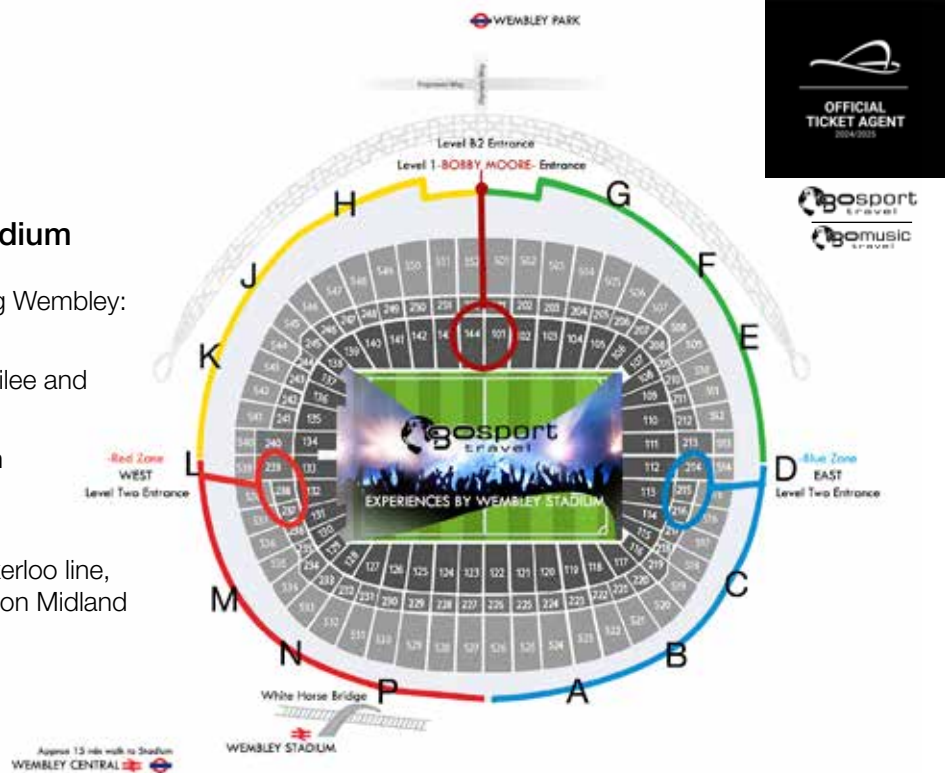
For more information regarding concerts, seating and prices, please visit [www.gosporttravel.com](http://www.gosporttravel.com) or [www.gomusictravel.se](http://www.gomusictravel.se). You can also contact our sales team: [info@gosporttravel.com](mailto:info@gosporttravel.com), +46 660211090 (Sweden) or +44 2072403983 (UK)

# Wembley Stadium

## Getting to Wembley Stadium

There are three stations serving Wembley:

- Wembley Park Station  
(London Underground Jubilee and Metropolitan lines)
- Wembley Stadium Station  
(Chiltern Railways)
- Wembley Central Station  
(London Underground Bakerloo line,  
London Overground, London Midland  
and Southern lines)



## You need to know this:

- E-tickets will be sent to you by e-mail. Mobile tickets need to be downloaded in the Wembley app on your phone. Download the app well in advance of your trip to Wembley
- Each person can only bring one small bag, and it must not be bigger than A4 size  
Height 297mm (11.7 inches) Width 210mm (8.27 inches) Depth 210mm (8.27 inches)  
*Please note: this means the overall bag size. Bags that are half full and folded over to reduce their size will not be accepted.*
- A phone or camera can be carried into the stadium, but not in its own bag. In other words, you can bring these things in, as long as you still only have one bag in total that meets the policy.
- **Things you can NOT bring:** Large umbrellas, aluminium and glass drink containers, including perfume bottles, plastic bottles over 500ml, food and drinks, selfie sticks, pushchairs, Weapons and tools, Flares, lasers, smoke devices and cannisters, Large-bodied cameras and camcorders, Drones, unauthorised musical instruments and vuvuzelas or any national flag not of the competing international teams.
- Wembley is a cashless stadium
- Dress code is Smart Casual.
- Wembley has the right to refuse entry or to eject you from the stadium if they believe you are not following their rules.
- Non smoking venue, including electronic and vapor cigarettes